

COMUNÈ

L'ENERGIA COMUNE DEI COMUNI



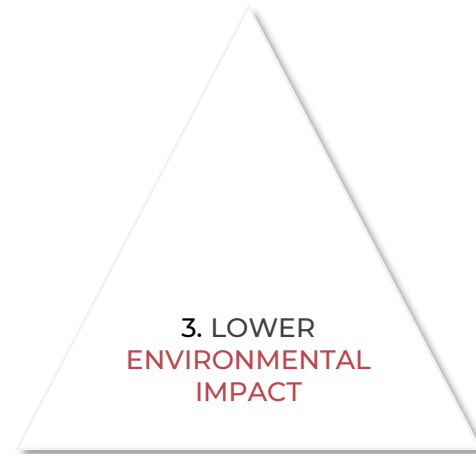
EVERY WASTE TODAY IS A WRONG TO NEW GENERATIONS

MARIO DRAGHI
PRESIDENTE DEL CONSIGLIO

WHEN RENEWABLE ENERGY PLANTS ARE OWNED BY THE
MUNICIPALIZED OR CITIZENS OF A COOPERATIVE, THEY ACHIEVE
EIGHT TIMES MORE REVENUE FOR THE REGION THAN WHEN THEY
ARE THE PROPERTY OF A LARGE UTILITY.

DIRK VANSINT JAN
RESCOOP.EU

FEDERAZIONE EUROPEA
DELLE COOPERATIVE
ENERGETICHE CITTADINE



TITOLO TAVOLA

RENEWABLE ENERGY COMMUNITY

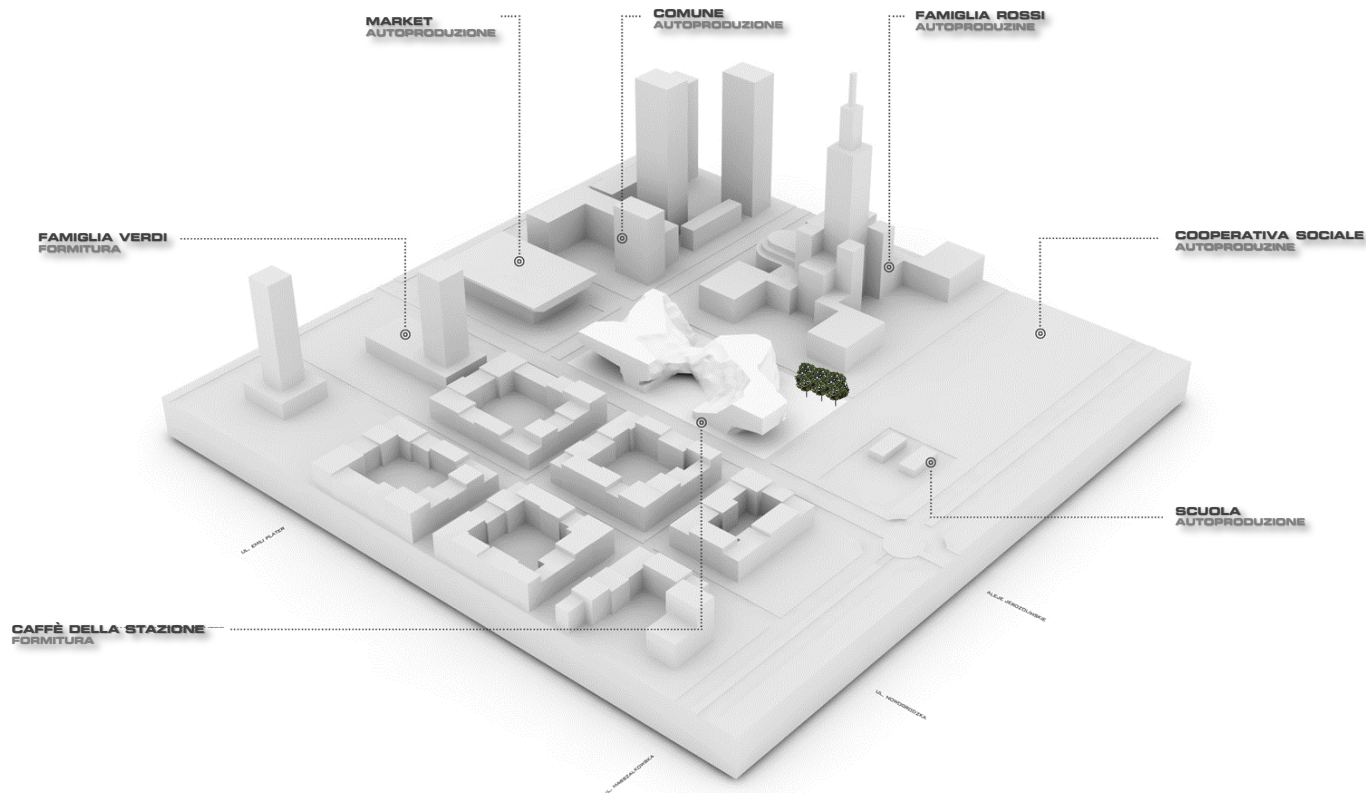
OGGETTO




numero tavola

01

Via Antonio Gallonio 23
C.F. 97385320581
Tel. 06-44340366 Fax 06-44340709
romalazio@federconsumatori.lazio.it
marzo 2021 www.federconsumatori.lazio.it



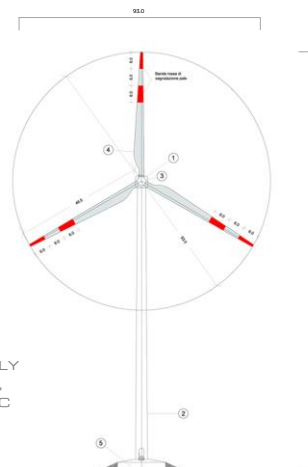
RENEWABLE ENERGY COMMUNITY

- ▼ THE RENEWABLE ENERGY COMMUNITY MUST OWN THE FOLLOWING REQUIREMENTS:
- ▼ BE AN AUTONOMOUS LEGAL ENTITY WHO, ACTING IN ITS OWN NAME, CAN EXERCISE RIGHTS AND BE SUBJECT TO OBLIGATIONS;
- ▼ HAVING AS A MAJOR SOCIAL OBJECT (AS REQUIRED BY THE STATUTE AND / OR BY THE DEED OF Incorporation) THAT OF PROVIDING ENVIRONMENTAL, ECONOMIC OR SOCIAL BENEFITS AT COMMUNITY LEVEL TO ITS SHAREHOLDERS OR MEMBERS OR TO THE LOCAL AREAS IN WHICH FINANCIALS OPERATE;
- ▼ HAVE A STATUTE OR A DEED OF CONSTITUTION THAT PROVIDES FOR PARTICIPATION IN THE OPEN AND VOLUNTARY COMMUNITY;
- ▼ HAVE SHAREHOLDERS OR MEMBERS WHO ARE INDIVIDUALS, SMALL AND MEDIUM-SIZED ENTERPRISES (SMEs), TERRITORIAL BODIES OR LOCAL AUTHORITIES, INCLUDING MUNICIPAL AUTHORITIES, PROVIDED THAT, FOR PRIVATE ENTERPRISES, PARTICIPATION IN THE COMMUNITY OF RENEWABLE ENERGY MAIN INDUSTRIAL AND / OR;
- ▼ BE THE OWNER OR HAVE THE FULL AVAILABILITY OF THE PRODUCTION PLANTS BELONGING TO THE CONFIGURATION.

THE COMPLETE TRANSITION OF THE DIRECTIVE IS EXPECTED BY JUNE 2021, BUT THE START OF THE TRANSITIONAL PHASE AND THE INTERVENTION OF THE ENERGY AUTHORITY HAVE ALREADY MADE THE REGULATORY AND REGULATORY INFRASTRUCTURE AVAILABLE IN ORDER TO ALREADY CONSTITUTE A COMMUNITY.

SUPPLYING ENERGETIC

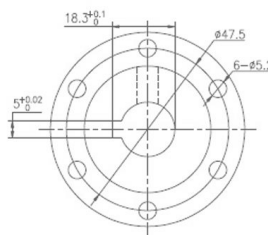
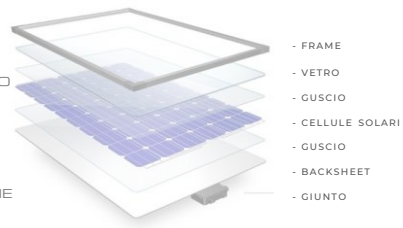
Nome tabella		
• altezza mt. (L) 1	100	1740
• larghezza mt. (L) 2	4,20	
• spessore mt. (L) 3	40,0	
Carico		
• numero	3	
• lunghezza	40,0	
Materiali		
• tipo	acciaio zincato	
• spessore mt. (L) 1	0,50	
• spessore di ingombro (L) 2	4,20	
• spessore max. (L) 3	7,00	
Dimensioni		
• tipo	standard	
• potenza max. (L) 1	2000	2000



SUSTAINABLE INSTALLATIONS
WE ARE INTENDED TO PRODUCTION PLANTS OF ELECTRICITY THAT USES FOR THIS PRODUCTION EXCLUSIVELY WIND, SOLAR, AEROTHERMAL, GEOTHERMAL, HYDROTHERMIC AND OCEAN, HYDRAULIC, BIOMASS, LANDFILL GAS, RESIDUAL GASES FROM THE PURIFICATION PROCESSES AND BIOGAS ENERGY.

SELF-PRODUCTION

YOU MUST HAVE OR INTEND TO BUILD A RENEWABLE PLANT WHOSE POWER CANNOT EXCEED 200 KW) AND / OR IT CAME INTO OPERATION AFTER THE DATE OF ENTRY INTO FORCE OF THE MILLEPROROGHE CONVERSION LAW (1.3.2020)



IT IS A RENEWABLE ENERGY COMMUNITY, A COOPERATIVE, NON-PROFIT ELECTRICAL SUPPLIER AND A COMMUNITY COMPANY THAT IS COMMITTED TO THE PRODUCTION AND SUPPLY OF CLEAN AND AFFORDABLE ENERGY AND HAS THE PURPOSE

FAVORING THE ENERGY TRANSITION FROM THE BOTTOM CONTRIBUTE TO THE GROWTH OF THE ENERGY COMMUNITY PARTICIPATE IN THE LIFE OF THE COMMUNITY

SUPPLY ENERGETICS



PRIVATE HOUSES

BE THE OWNER OF CONNECTION POINTS LOCATED ON LOW VOLTAGE ELECTRICAL NETWORKS SUBJECT TO THE SAME MEDIUM / LOW VOLTAGE TRANSFORMATION CABIN (SAME SECONDARY CABIN)



PUBLIC BUILDINGS

BE THE OWNER OF CONNECTION POINTS LOCATED ON LOW VOLTAGE ELECTRICAL NETWORKS SUBJECT TO THE SAME MEDIUM / LOW VOLTAGE TRANSFORMATION CABIN (SAME SECONDARY CABIN)



SMEs AND THIRD SECTOR

IN THE CASE OF PRIVATE BUSINESSES, PARTICIPATION IN THE RENEWABLE ENERGY COMMUNITY IS NOT MUST SET UP THE MAIN COMMERCIAL AND / OR INDUSTRIAL ACTIVITY

TITOLO TAVOLA

OPERATION

OGGETTO

COMUNE
L'ENERGIA COMUNE DEI COMUNI



numero tavola

04

Via Antonio Gallonio 23
C.F. 97385320581
Tel. 06-44340366 Fax. 06-44340709
romalazio@federconsumatori.lazio.it
marzo 2021 www.federconsumatori.lazio.it



**RENEWABLE
ENERGY
COMMUNITY**

IT IS BASED ON OPEN AND VOLUNTARY PARTICIPATION; IT IS AUTONOMOUS AND IS ACTUALLY CONTROLLED BY ASSOCIATES OR MEMBERS WHO ARE LOCATED NEAR RENEWABLE ENERGY PRODUCTION PLANTS



**SUSTAINABLE
SUPPLIER**

IS A COOPERATIVE, NON-PROFIT ELECTRICAL SUPPLIER THAT PROVIDES ITS ASSOCIATES EXCLUSIVELY INNOVABLE ENERGY, SELF-PRODUCED OR COMING FROM PHOTOVOLTAIC, WIND AND HYDROELECTRIC SYSTEMS GUARANTEED



**COMMUNITY
COMPANY**

IT IS A COMMUNITY COMPANY, WHICH PROVIDES SERVICES AND ACTIVITIES THAT HAVE THE PURPOSE OF BRINGING BENEFITS TO THE COMMUNITY AS A WHOLE.

FORESEEN BENEFITS

COMUNÈ IS A COMMUNITY COMPANY THAT PERFORMS SERVICES AND ACTIVITIES THAT RETURN WELL BEYOND THE PLATEAU OF ITS MEMBERS, BRINGING BENEFITS TO THE COMMUNITY AS A WHOLE". BESIDE THE CHOICES MADE ABOUT THE ORIGIN AND THE CHARACTERISTICS, OF FULL AND EFFECTIVE ENVIRONMENTAL SUSTAINABILITY, OF THE DISTRIBUTED ENERGY, OUR WILL DEVELOP SOCIAL AND WORKING INCLUSION AS WELL AS A TARIFF POLICY OF BENEFIT FOR THE REALITY AND COMPANIES, AS WELL AS FOR THE COMPANY OF THE THIRD SECTOR.



JOB

THE IMPLEMENTATION OF THE PLANTS, THROUGH THE MECHANISM OF INCENTIVES PROVIDED FOR RENEWABLES, A SET OF VALUES, STARTING WITH THE INVOLVEMENT OF PROFESSIONALS AND LOCAL CRAFTSMEN: PLANNING AND MANAGEMENT OF WORKS ENGAGED, ENGINEERS, ENGINEERS, ENGINEERS AND MANAGEMENT.



ASSOCIATES

SHAREHOLDERS WHO MAKE THE ROOFS OF THEIR HOUSES AVAILABLE FOR THE INSTALLATION OF 3 KW SYSTEMS WILL HAVE, FOR SEVERAL YEARS, THE SUPPLY OF ELECTRICITY SUBSTANTIALLY FREE OF CHARGE.



COMMUNITY

THE INCENTIVE PROVIDED BY THE GSE (NET OF ANY SURPLUS BETWEEN THE ENERGY PRODUCED AND CONSUMED, WHICH REMAINS FOR THOSE WHO HAVE THE SYSTEM ON THEIR ROOF), IS USED, WITH A CREDIT TRANSFER BY THE SHAREHOLDER TO THE COOPERATIVE, TO SUPPORT THE COSTS AND POSSIBLE PROFITS THAT ARE DETERMINED IN THE FINANCIAL STATEMENTS OF THE COOPERATIVE ARE ALLOCATED, ON THE BASIS OF THE DECISIONS OF THE SHAREHOLDERS 'MEETING, TO IMPROVE THE QUALITY OF LIFE IN THE REFERENCE COMMUNITY.

TITOLO TAVOLA

FORESEEN BENEFITS

OGGETTO

Federconsumatori Lazio

numero tavola
06

Via Antonio Gallonio 23
C.f. 97385320581
Tel. 06-44340366 Fax. 06-44340709
romalazio@federconsumatori.lazio.it
marzo 2021 www.federconsumatori.lazio.it

JOB

IN ORDER TO MAKE COMMON WORKING, DIFFERENT PROFESSIONALISM ARE NECESSARY THAT MUST BE SEARCHED FOR ALL WITHIN THE COMMUNITY. COMMON IS ALSO A CONSULTANT WHO HELPS CITIZENS IN THE PATH TOWARDS ENERGY EFFICIENCY AND SELF-PRODUCTION, WHO DOES MAINTENANCE OF THE SYSTEMS ALSO FOR DOMESTIC, WHO ASSISTS WITH INCENTIVE PRACTICES AND BONUSES.



PROFESSIONALS



ENGINEERS



EMPLOYEES



WORKERS



**COMMUNITY
MANAGER**

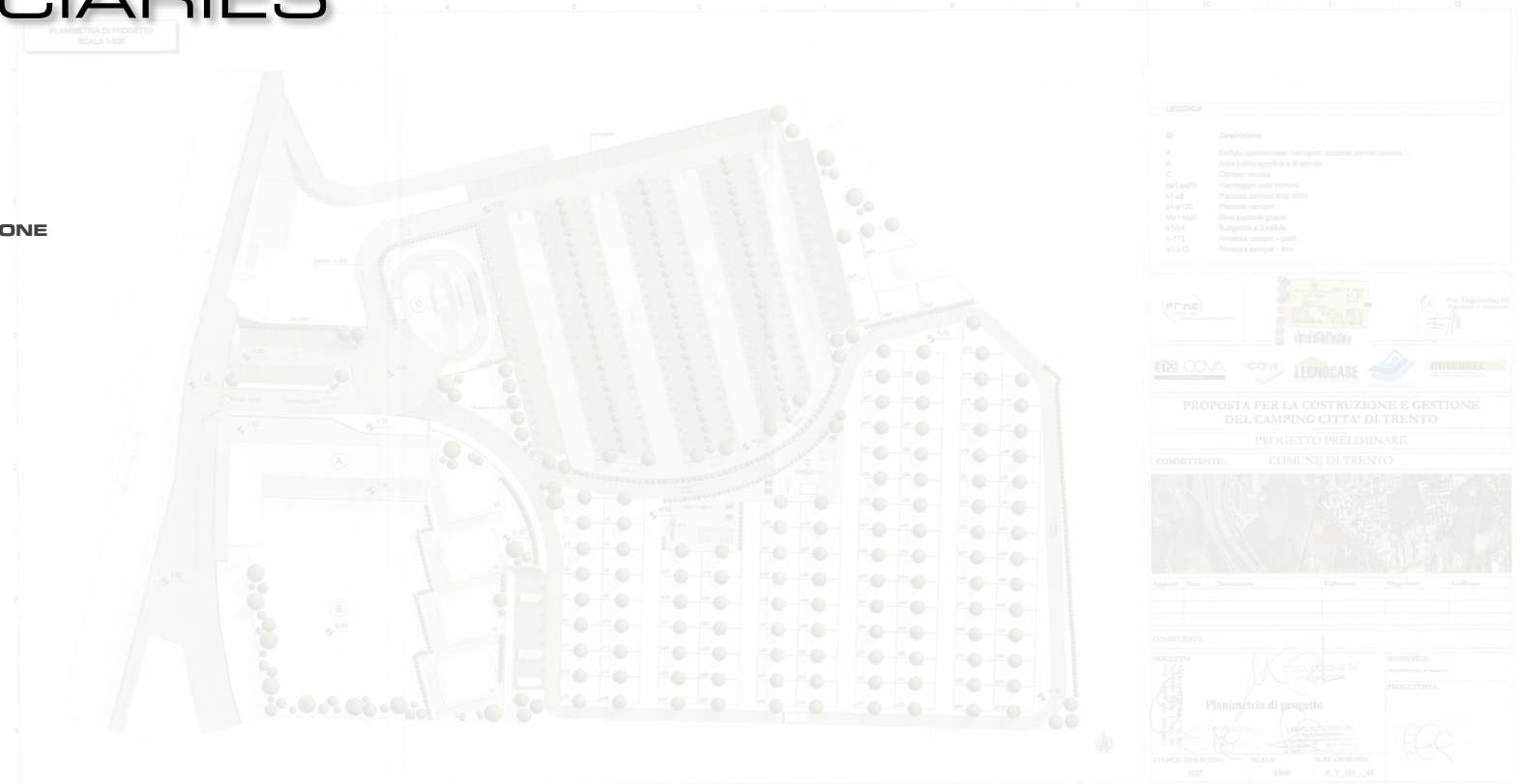
TRAINING

COMUNE



BENEFICIARIES

PUBBLICA AMMINISTRAZIONE
CITTADINI
TERZO SETTORE
PMI



FOCUS

CLIENTE ATTIVO IEM ART. 16

IN GENERAL TERMS, THE EXTENDED SELF-CONSUMPTION REFERRED TO IN RED II DUE TO THE PRESENCE OF PLANTS NOT NECESSARILY FROM RENEWABLE SOURCES THAT PRODUCE AND / OR DISPOSE OF ENERGY IN CIRCUMSCRIBED SITES OWNED BY THE CUSTOMERS.

COMUNITÀ DI CITTADINI (CEC) IEM ART. 16

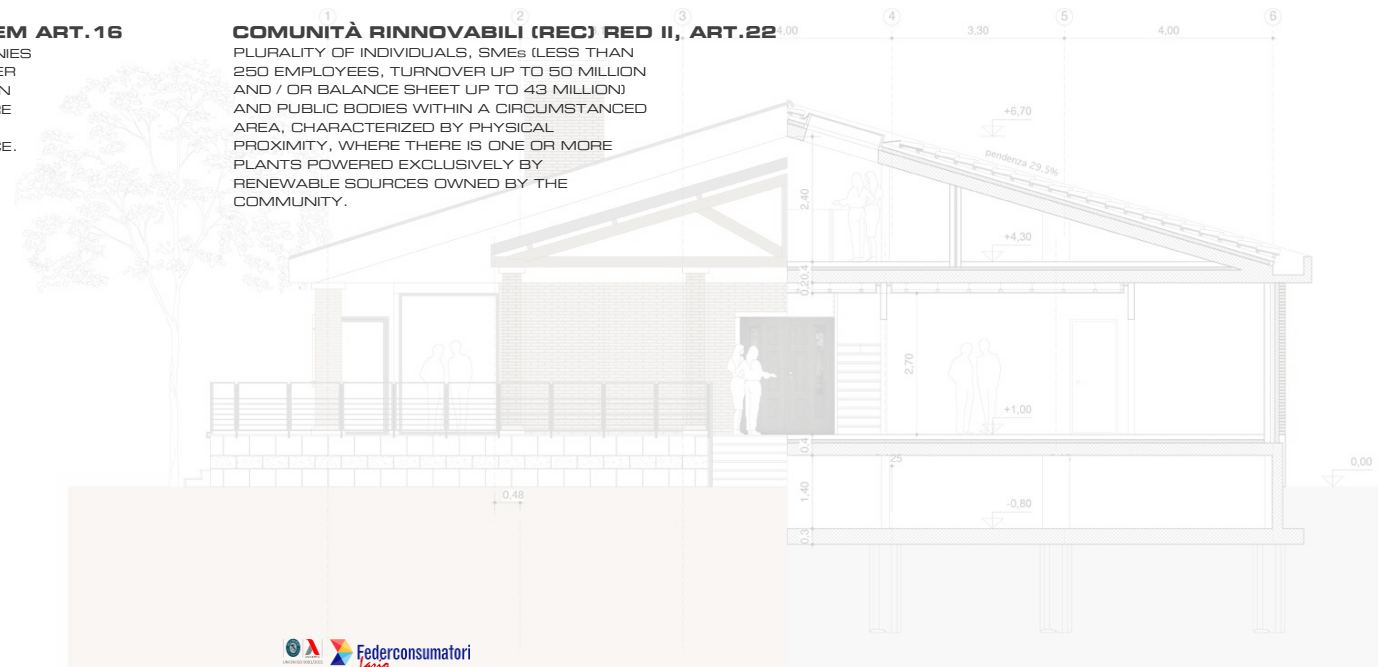
PLURALITY OF INDIVIDUALS, SMALL COMPANIES (AVERAGE OF 50 EMPLOYEES AND TURNOVER UP TO 10 MILLION) AND PUBLIC BODIES IN AN AREA (NOT NECESSARILY PROXIMITY), WHERE THERE IS ONE OR MORE PLANTS OWNED BY THE COMMUNITY, POWERED BY ANY SOURCE.

AUTOCONSUMO COLLETTIVO RED II, ART.21

PLURALITY OF CONSUMERS LOCATED INSIDE A BUILDING, WHERE THERE IS ONE OR MORE PLANTS POWERED EXCLUSIVELY BY RENEWABLE SOURCES

COMUNITÀ RINNOVABILI (REC) RED II, ART.22

PLURALITY OF INDIVIDUALS, SMEs (LESS THAN 250 EMPLOYEES, TURNOVER UP TO 50 MILLION AND / OR BALANCE SHEET UP TO 43 MILLION) AND PUBLIC BODIES WITHIN A CIRCUMSTANCED AREA, CHARACTERIZED BY PHYSICAL PROXIMITY, WHERE THERE IS ONE OR MORE PLANTS POWERED EXCLUSIVELY BY RENEWABLE SOURCES OWNED BY THE COMMUNITY.



COMUNÈ

L'ENERGIA COMUNE DEI COMUNI